



GAT MONTHLY MEMBERSHIP PROGRESS REPORT

Results as of: 6/30/2024

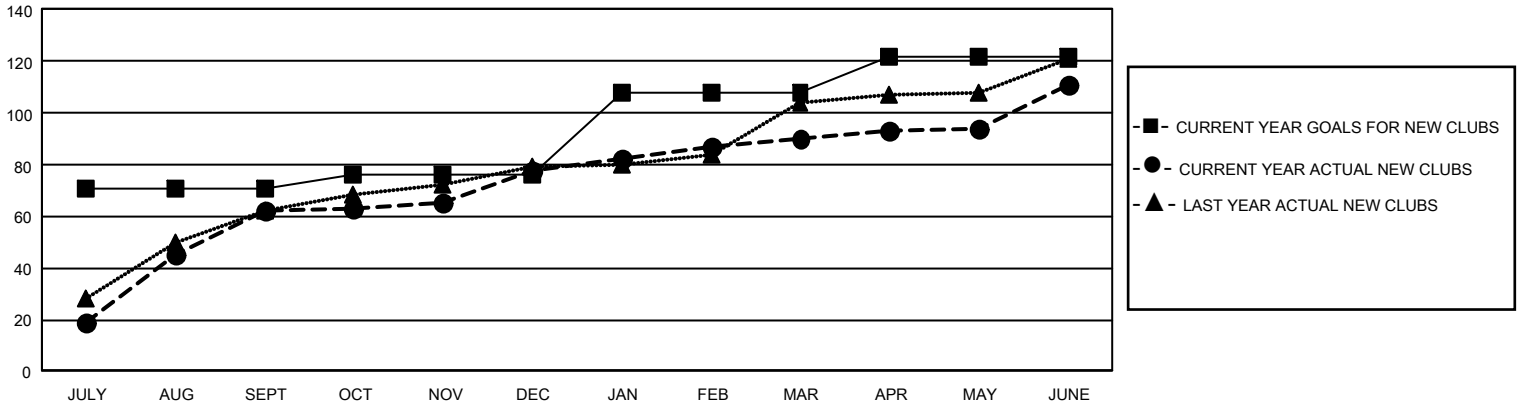
GMT Constitutional Area 6 - I, Group G

REPORT DOES NOT INCLUDE CLUBS IN UNDISTRICTED AREAS.

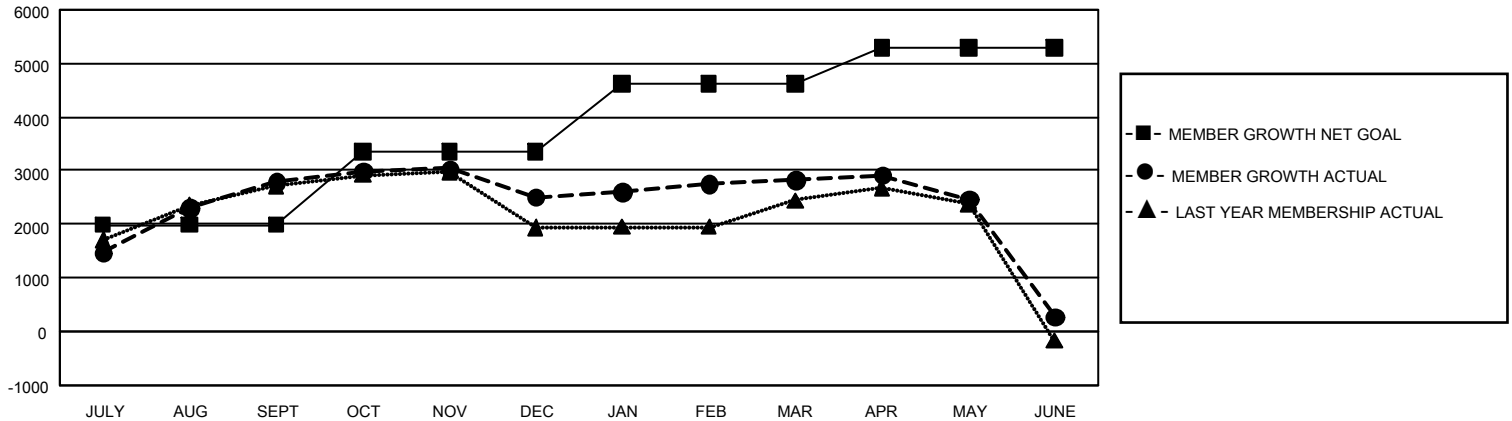
Clubs			
RESULTS FOR 2023-2024			
QUARTER	NEW CLUB GOAL	NEW CLUBS	DROPPED CLUBS
JULY/AUG/SEPT	213	62	19
OCT/NOV/DEC	15	16	40
JAN/FEB/MAR	96	12	8
APR/MAY/JUNE	42	21	4

Members			
RESULTS FOR 2023-2024			
QUARTER	MEMBER GROWTH NET GOAL	MEMBER GROWTH ACTUAL	DROPPED MEMBERS ACTUAL (including transfers)
JULY/AUG/SEPT	1990	4,392	1,364
OCT/NOV/DEC	1370	1,779	1,993
JAN/FEB/MAR	1255	1,072	584
APR/MAY/JUNE	675	2,122	4,084

GOALS AND ACTUAL NEW CLUBS CUMULATIVE



GOALS AND ACTUAL MEMBERS CUMULATIVE



DROPPED CLUBS: 71 DROPPED MEMBERS DECEASED 155 CLUB CANCELLED 1,069 OTHER 6,781 TOTAL 8,005	835 CLUBS OF 1,158 ADDED 1 OR MORE NEW MEMBERS	GENDER DISTRIBUTION MALE 26,452 (68.48%) FEMALE 12,168 (31.50%) NON BINARY 2 (0.01%) PREFER NOT TO ANSWER 4 (0.01%)
	CLICK HERE FOR CUMULATIVE MEMBERSHIP DATA	TOTAL FAMILY UNIT MEMBERS 18,066 FAMILY MEMBERS PAYING HALF DUES 10,876